



Construction stage 1

Stage settings

Terrain modelling mode : terrain points and edges
Earthworks mode : fill and excavate
Smoothing : maximum

Terrain Points

No.	Coordinates of terrain points			No.	Coordinates of terrain points		
	x [m]	y [m]	z [m]		x [m]	y [m]	z [m]
1	13,85	38,40	0,30	2	19,48	42,03	0,40
3	25,89	41,08	0,80	4	30,48	35,88	1,20
5	36,37	32,94	0,50	6	38,27	24,97	0,00
7	34,55	11,38	0,00	8	27,97	8,52	0,00
9	21,30	8,60	0,00	10	14,72	16,06	0,00
11	11,69	27,74	0,00	12	10,82	34,85	0,00
13	16,54	33,29	3,10	14	21,39	36,58	3,10
15	27,79	34,40	3,10	16	32,73	25,00	3,10
17	25,80	24,02	3,10	18	18,44	23,42	3,10
19	16,10	28,61	3,10	20	32,30	18,39	-4,20
21	24,59	16,57	-4,60	22	25,54	16,83	-5,00
23	24,94	13,28	-3,60	24	30,91	14,06	-3,70
25	37,41	17,53	0,00	26	14,72	6,62	0,00
27	12,38	12,42	0,00	28	12,73	8,87	0,00
29	15,67	12,25	-1,20	30	15,67	9,21	-0,80
31	18,44	10,77	-1,80	32	18,10	16,06	-1,90
33	32,64	44,11	0,00	34	39,57	38,22	0,00
35	40,35	30,17	0,00	36	22,69	44,63	0,00
37	13,68	41,69	0,00	38	32,64	32,16	3,20
39	35,15	23,93	0,40	40	5,71	22,46	0,00
41	5,28	40,56	0,00	42	46,76	29,48	0,00
43	46,76	5,49	0,00	44	16,19	48,53	0,00
45	38,79	7,48	0,00				

Geological Model

The model is generated.

Calculation of earthwork volumes between stage 1 and the original model

EXCAVATED

Soil	Without bulking [m ³]	Bulking coeff.	Total [m ³]
Made-up Ground	123,90	1,00	123,90
Clay	303,42	1,00	303,42
Slate	149,51	1,00	149,51
Total	576,83	-	576,83

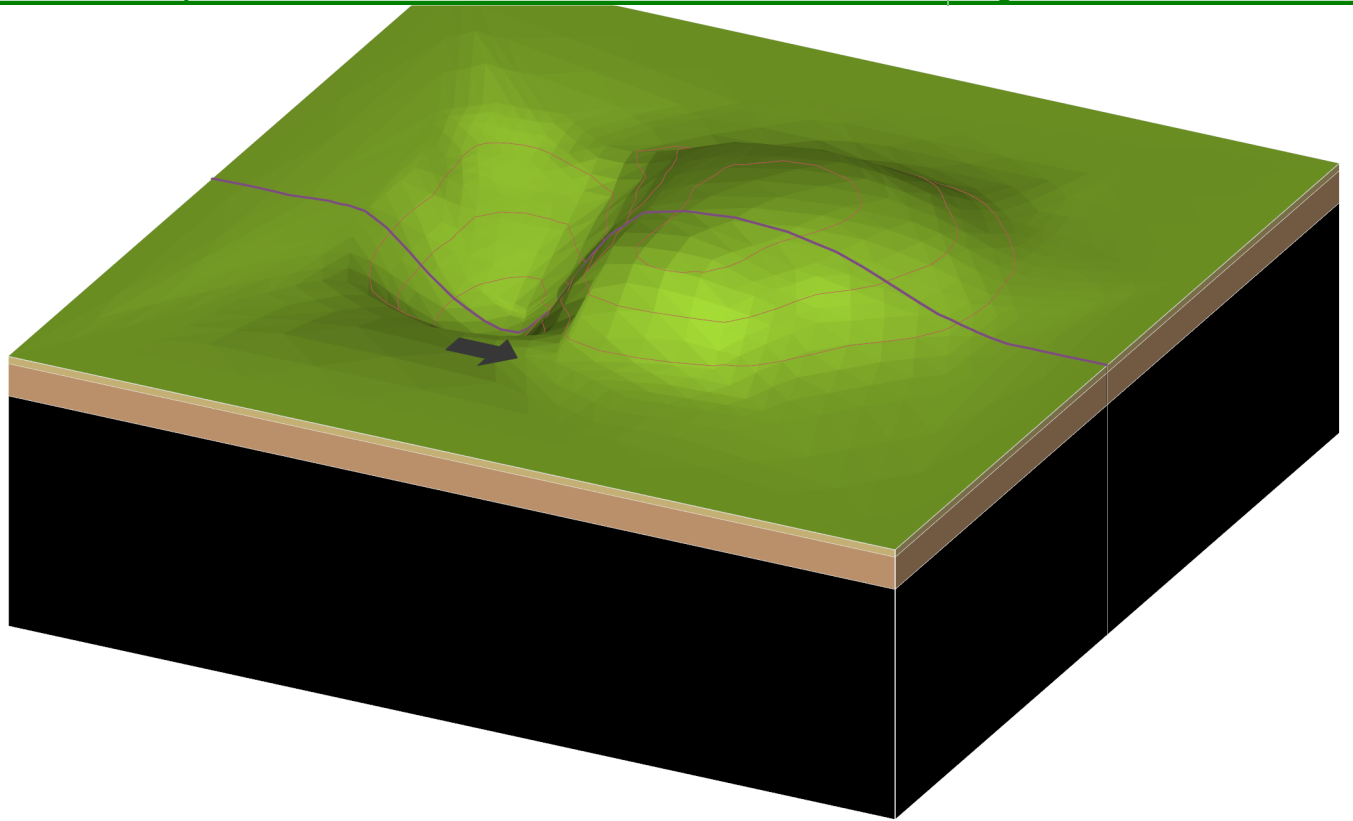
FILLED

Soil	[m ³]
Excavated Soil	1195,29
Total	1195,29



Name : Model podloží

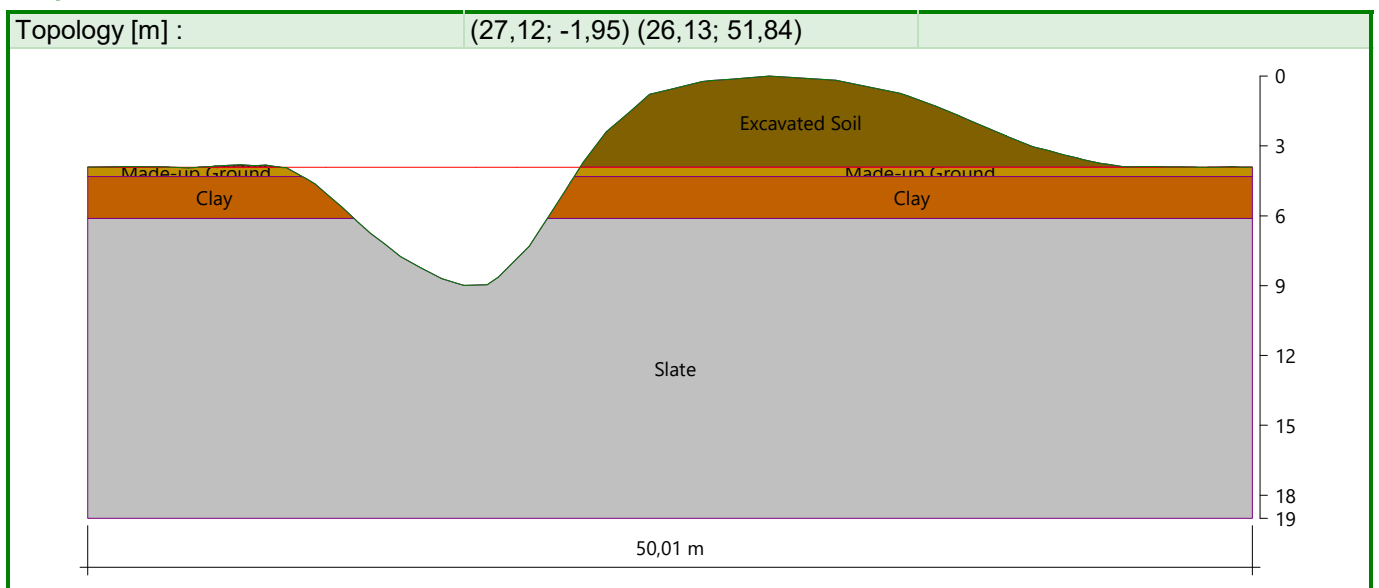
Stage : 1



Output Sections

No.	Name	Topology [m]
1		(27,12; -1,95) (26,13; 51,84)

Output Sections -





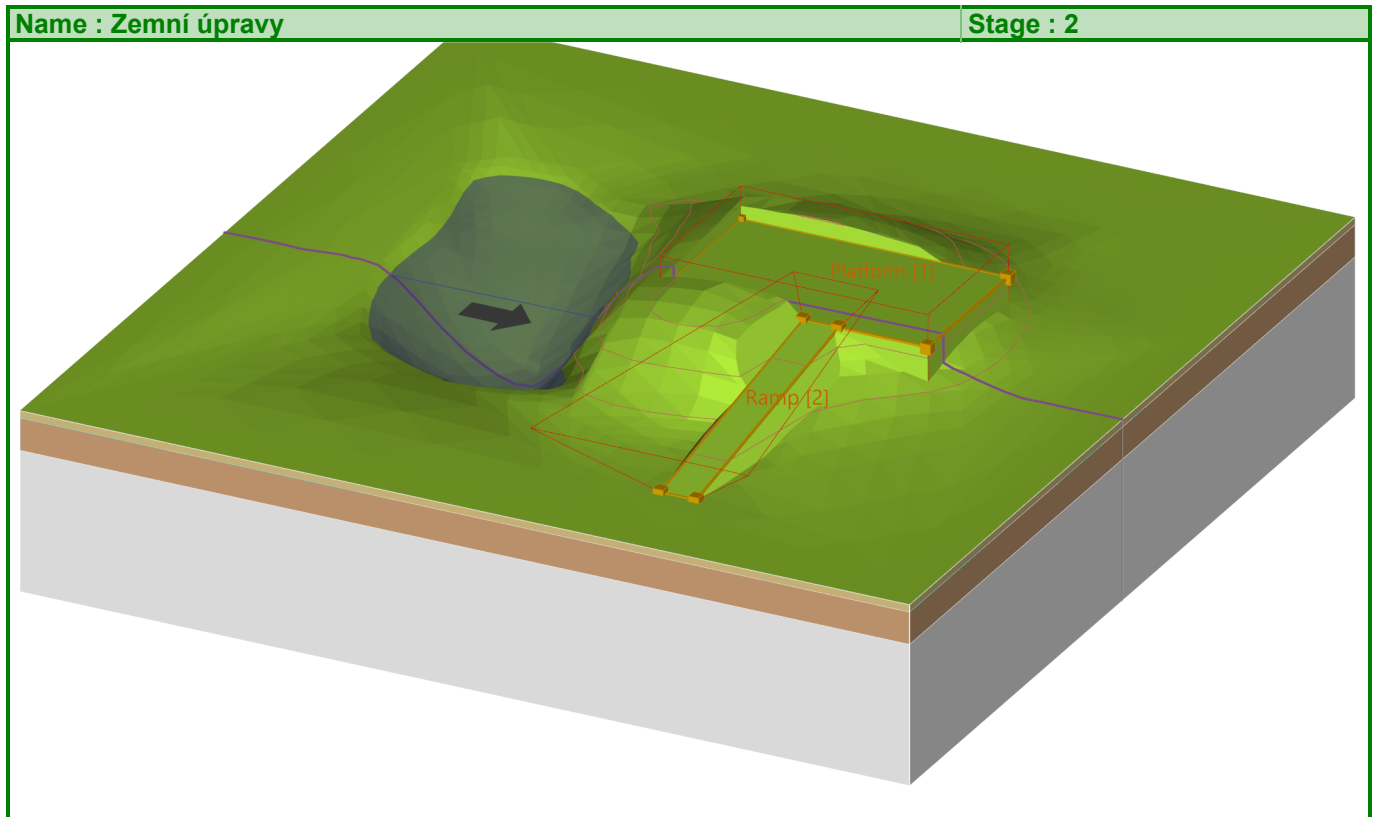
Construction stage 2

Stage settings

Terrain modelling mode : earthworks

Earthworks

No.	Name	Number of points	Coordinate z [m]	Slope inclination [°]	Earthwork mode
1	Platform	4	2,70	89,00	fill and excavate
2	Ramp	4	-	45,00	fill and excavate



Water

No.	x	Coordinate y	z	Point origin
1	28,47	15,03	-0,40	(input)

Geological Model

The model is generated.

Calculation of earthwork volumes between stage 2 and stage 1

EXCAVATED

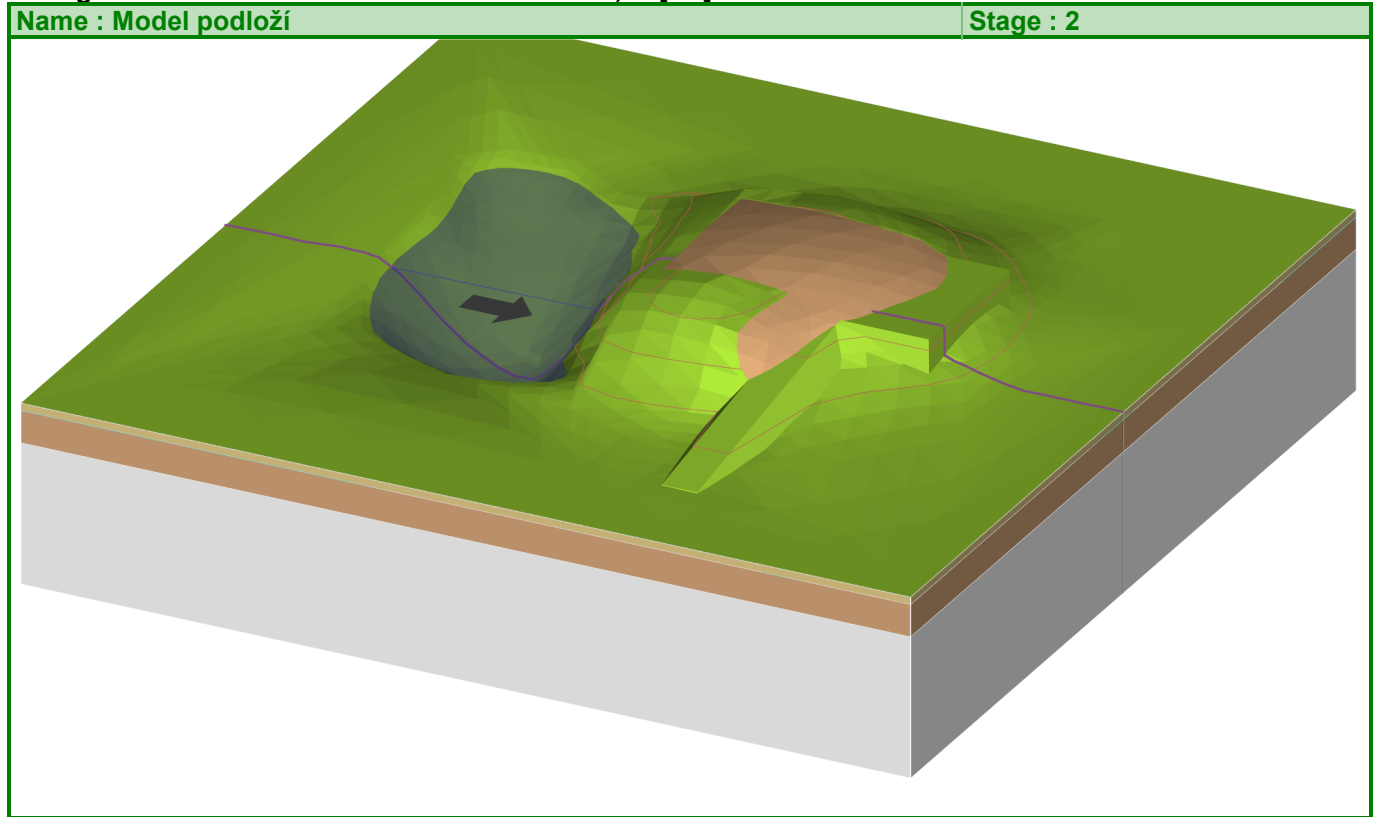
Soil	Without bulking [m ³]	Bulking coeff.	Total [m ³]
Excavated Soil	104,08	1,00	104,08
Total	104,08	-	104,08



FILLED

Soil	[m ³]
Excavated Soil	41,37
Total	41,37

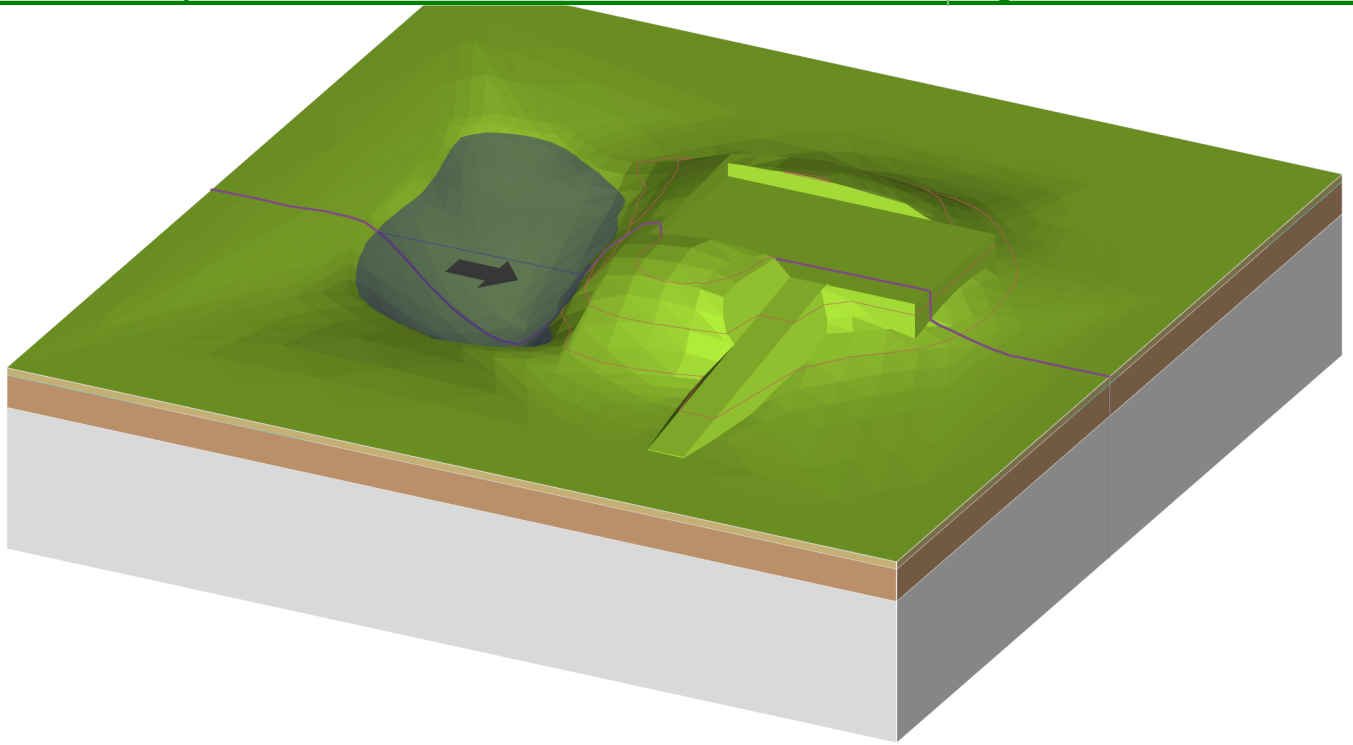
Change of water volumes above the terrain: 452,93 [m³]





Name : Model podloží

Stage : 2



Output Sections

No.	Name	Topology [m]
1		(27,12; -1,95) (26,13; 51,84)

Output Sections -

