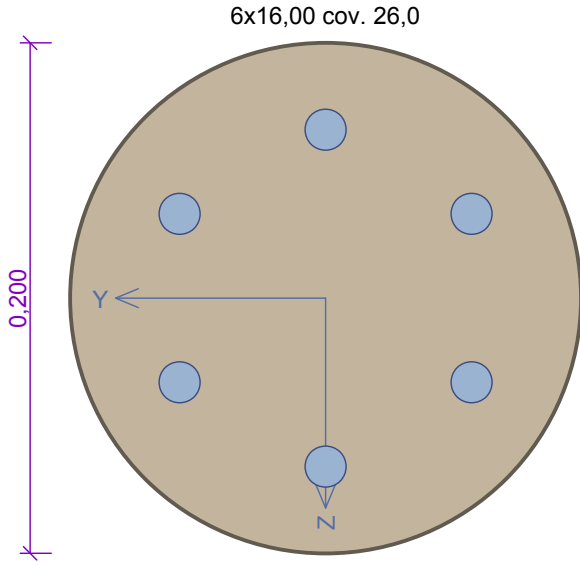
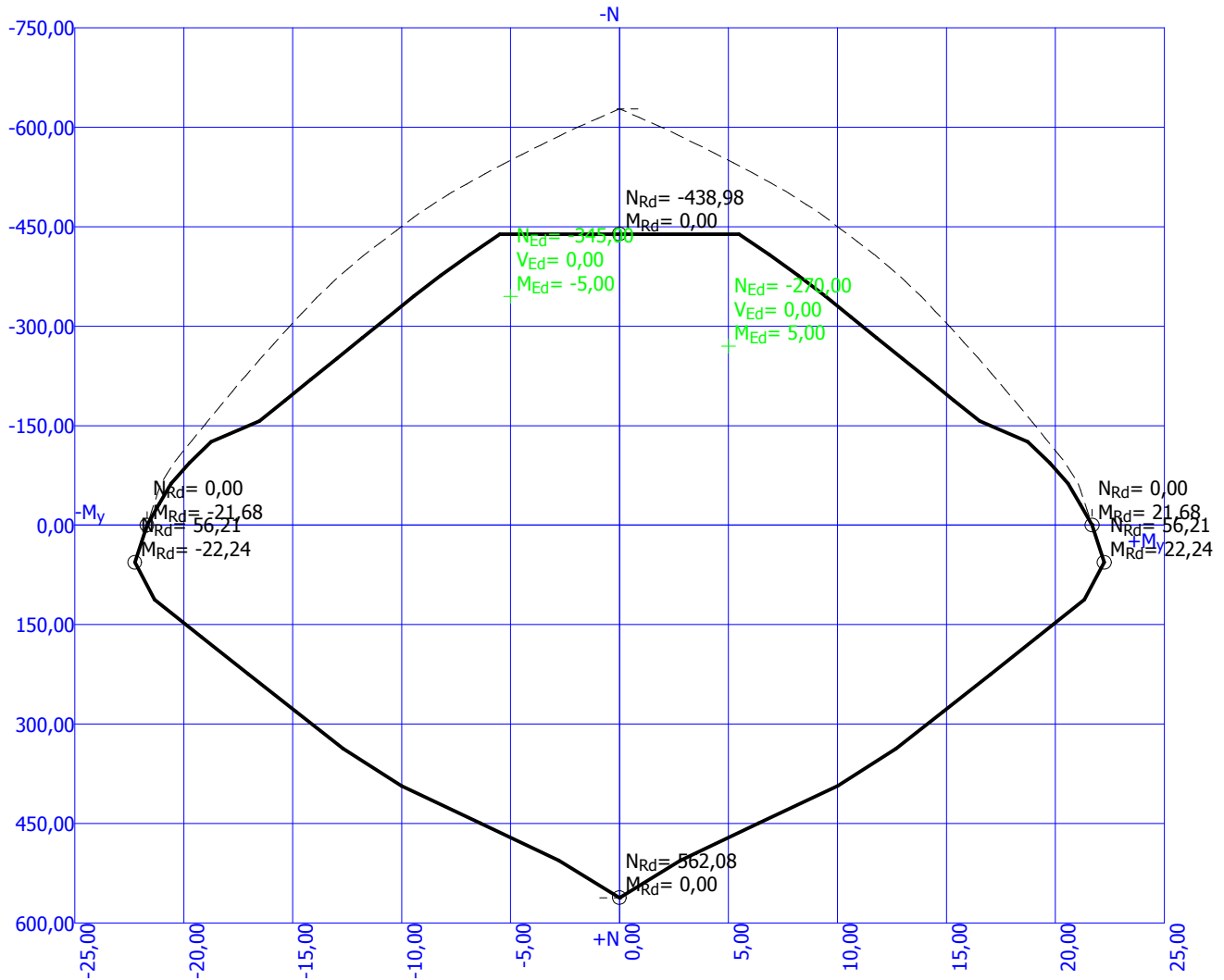


Column A7

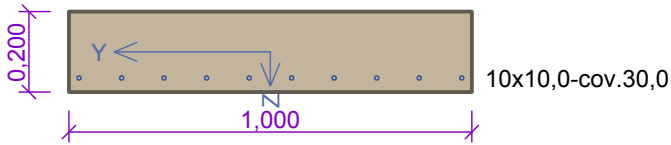


Member type: column
Environment: X0
Concrete : C 30/37
 $f_{ck} = 30,0 \text{ MPa}$; $f_{ctm} = 2,9 \text{ MPa}$; $E_{cm} = 32000,0 \text{ MPa}$
Longitudinal steel : 10505 (R) ($f_{yk} = 500,0 \text{ MPa}$; $E = 200000,0 \text{ MPa}$)
Transverse steel : B500 ($f_{yk} = 500,0 \text{ MPa}$; $E = 200000,0 \text{ MPa}$)
Buckling
Length for buckling calculation: $l = 3,00 \text{ m}$
Buckling length: $l_{ef} = 1,50 \text{ m}$
Reinforcement in compression not considered.
Stirrups
Profile: 6,0 mm; Distance: 0,20 m; Legs: 2

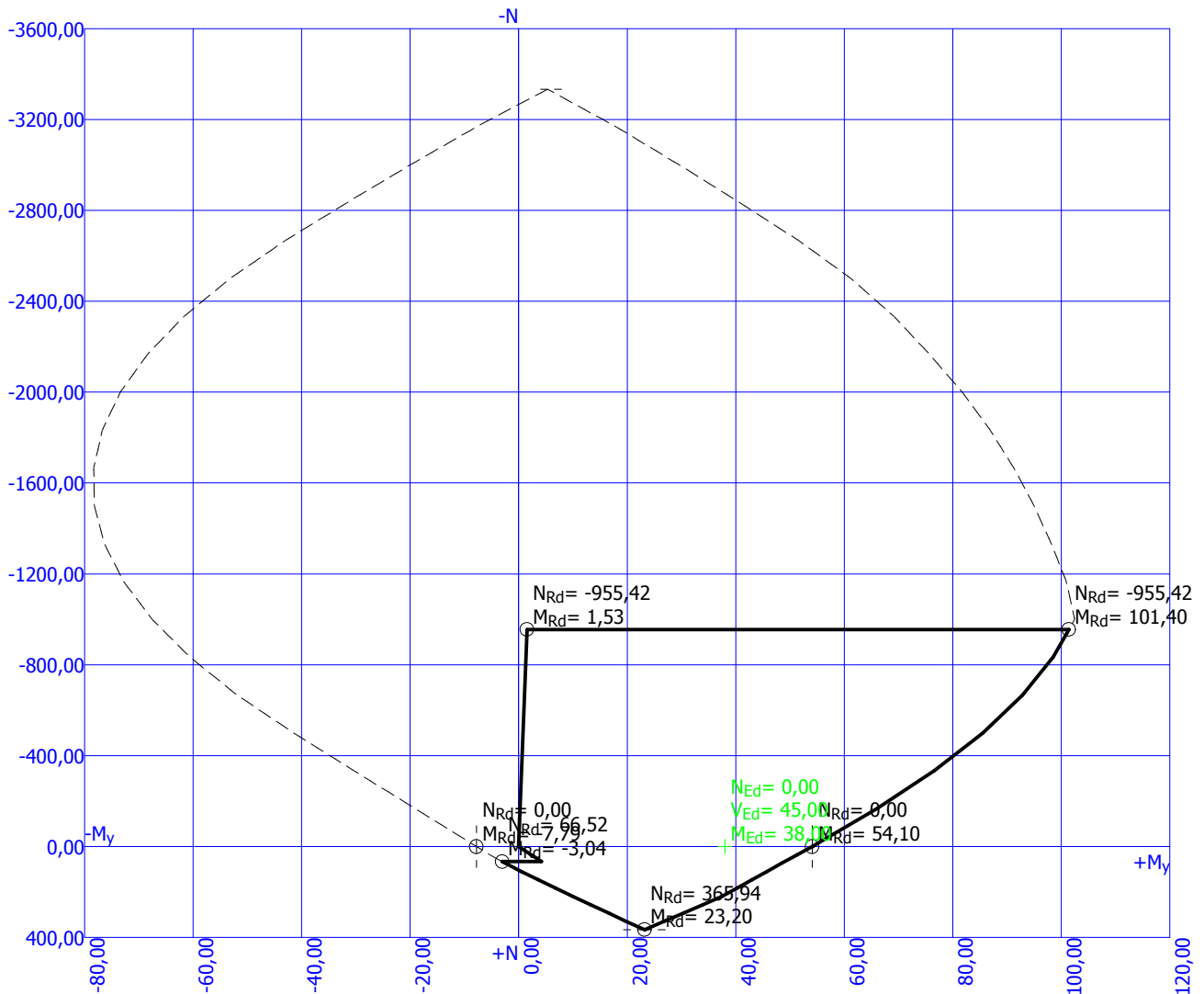


Overall section check PASS

Slab 0.2m

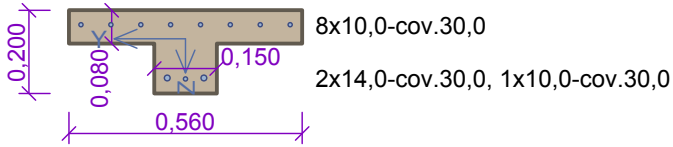


Member type: beam
Environment: X0
Concrete : C 25/30
 $f_{ck} = 25,0 \text{ MPa}$; $f_{ctm} = 2,6 \text{ MPa}$; $E_{cm} = 30500,0 \text{ MPa}$
Longitudinal steel : B500 ($f_{yk} = 500,0 \text{ MPa}$; $E = 200000,0 \text{ MPa}$)
Transverse steel : B500 ($f_{yk} = 500,0 \text{ MPa}$; $E = 200000,0 \text{ MPa}$)
Buckling
Buckling not considered
Reinforcement in compression not considered.
Section without shear reinforcement.

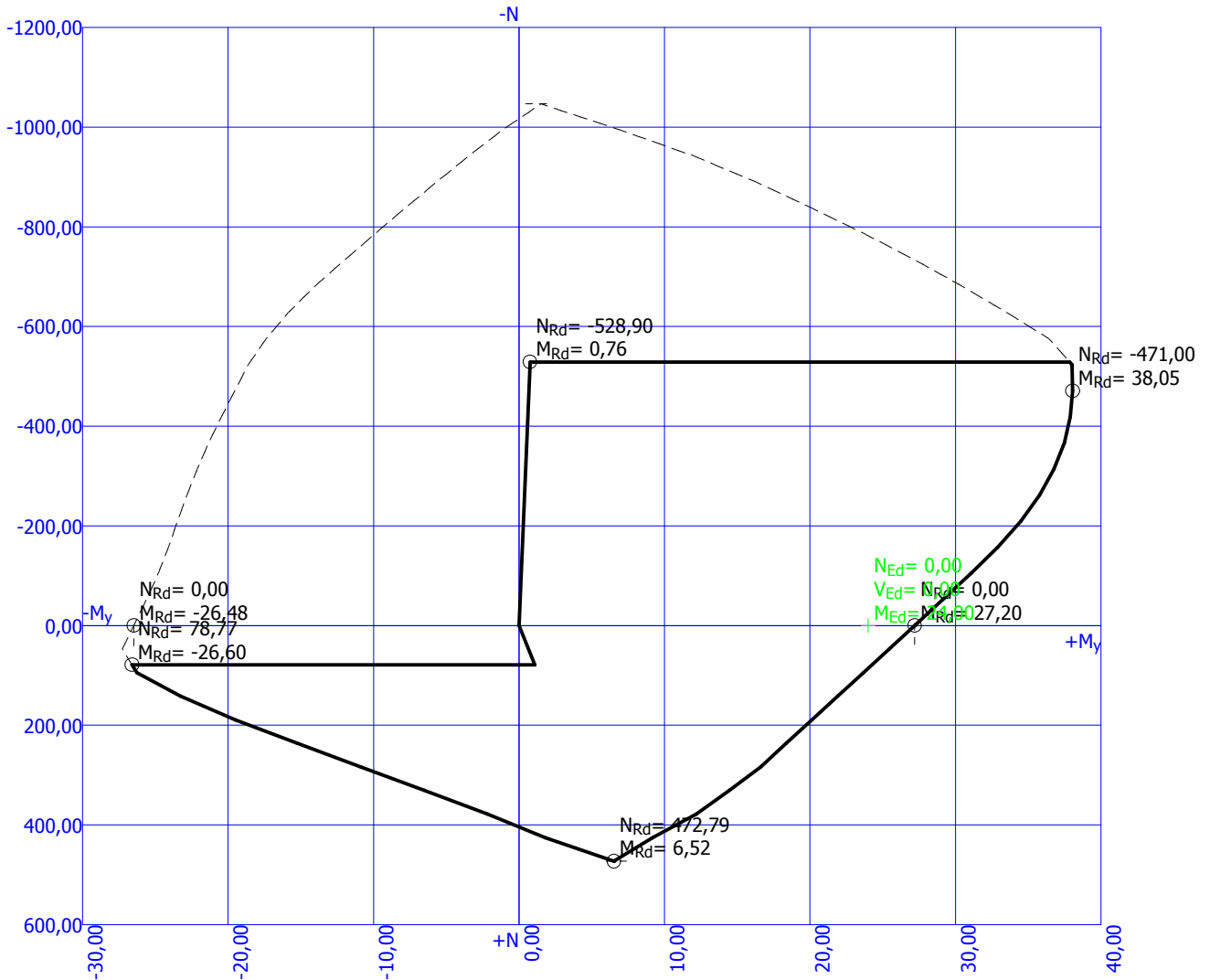


Overall section check **PASS**

Beam



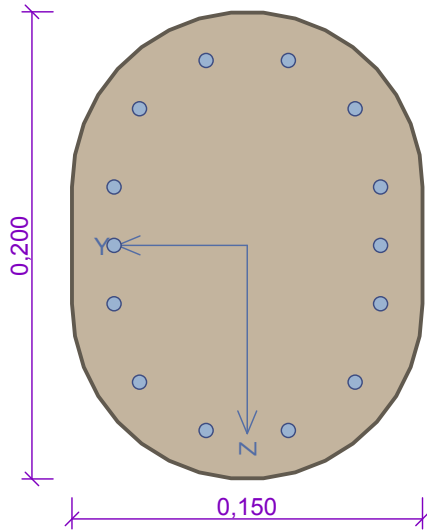
Member type: beam
Environment: X0
Concrete : C 25/30
 $f_{ck} = 25,0 \text{ MPa}$; $f_{ctm} = 2,6 \text{ MPa}$; $E_{cm} = 30500,0 \text{ MPa}$
Longitudinal steel : B500 ($f_{yk} = 500,0 \text{ MPa}$; $E = 200000,0 \text{ MPa}$)
Transverse steel : B500 ($f_{yk} = 500,0 \text{ MPa}$; $E = 200000,0 \text{ MPa}$)
Buckling
Buckling not considered
Reinforcement in compression not considered.
Section without shear reinforcement.



Overall section check PASS

Column Oval

4x6,00, 3x6,00 cov. 15,0



Member type: column
Environment: X0

Concrete : C 25/30

$f_{ck} = 25,0$ MPa; $f_{ctm} = 2,6$ MPa; $E_{cm} = 30500,0$ MPa

Longitudinal steel : B500 (cust.) ($f_{yk} = 500,0$ MPa; $E = 200000,0$ MPa)

Transverse steel : B500 ($f_{yk} = 500,0$ MPa; $E = 200000,0$ MPa)

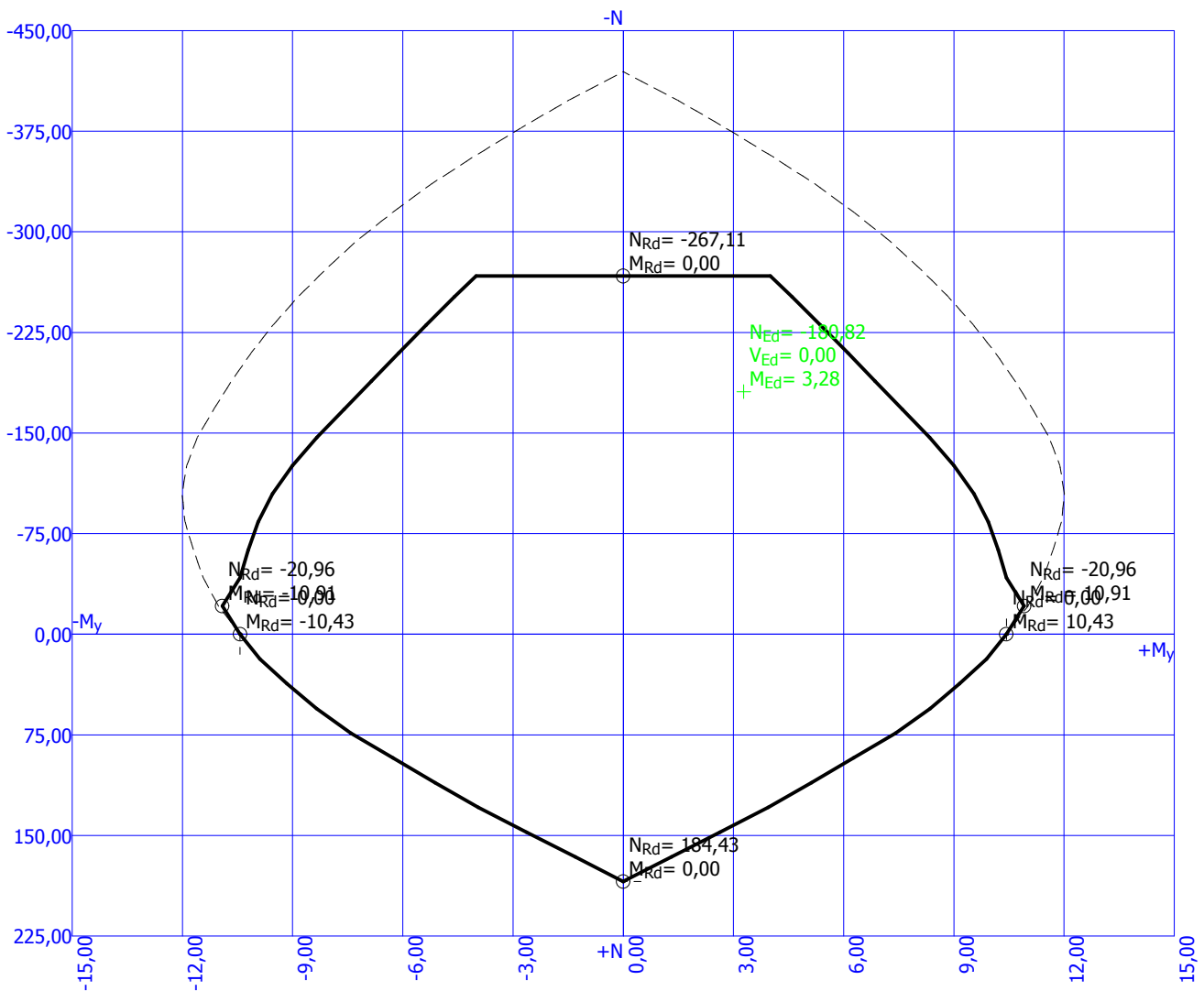
Buckling

Length for buckling calculation: $l = 2,00$ m

Buckling length: $l_{ef} = 2,00$ m

Reinforcement in compression not considered.

Section without shear reinforcement.



Overall section check PASS